



## **TRT™ Tile Hook System TRT™ 03**

The TRT™ Tile Hook System is specifically designed for tile roofs, offering durability and a long service life with high-quality aluminum and stainless-steel components. This versatile system accommodates various tile roof types, including flat tiles, S tiles, and W tiles — the most common tile series.

In addition to the primary components such as rails, hooks, and panel clamps, the system includes optional accessories like cable clips, microinverter racking kits, bonding jumpers, and more. The universal panel clamp doubles as both a mid-clamp and an end-clamp, fitting all mainstream solar panel.

- **UL 2703 LISTED**

The entire system is fully compliant with UL2703 standards.

- **PE certified**

Reviewed and approved by a Professional Engineer (PE) to ensure compliance with safety standards and adequate load capacity.



## **FEATURES**

- **25 years warranty**

Ensures a worry-free experience throughout the product's service life.



## PARTS OF SOLAR MOUNTING SYSTEM

**Rail -7.54ft/2300mm**  
**A188-2300**



Roof rail made from Aluminum 6005-T5 for standard conditions, featuring integrated wire management.

**Rail -144ft/4270mm**  
**A188-4270**



Roof rail made from Aluminum 6005-T5 for standard conditions, featuring integrated wire management.

**Rail Connector**  
**3010404**



Splice designed to connect TRT rails, made from high-quality aluminum.

**Hidden End Clamp**  
**3010138**



Secures modules to rail ends with a fully hidden bond, with no restrictions on module size or thickness.

**Mid Clamp**  
**3010355**



Black surface treatment, compatible with wide modules frame height range, and equipped with a grounding device.

**Tile Hook kit 1**  
**3010369**



Directly attaches to TRT Rail with multiple adjustment options to accommodate various tile roof types, compatible with 5/16" x 3" or 5/16" x 4" lag bolts.

**Tile Hook kit 2**  
**3010370**



Made from stainless steel 304, designed for direct attachment to TRT Rail, compatible with W or S-shaped tiles, and uses 5/16" x 3" or 5/16" x 4" lag bolts.

**Tile Hook Kit 3**  
**3010371**



Made from stainless steel 304, designed for direct attachment to TRT Rail, compatible with flat tiles, and uses 5/16" x 3" or 5/16" x 4" lag bolts.

**Skirt-7.54ft/2300mm**  
**A197-2300**



Customizable length options, easy assembly, compatible with any thickness of solar module, and aesthetically pleasing.



## PARTS OF SOLAR MOUNTING SYSTEM

**Micro Inverter Racking 1**  
3010167



Rail based system micro inverter holder.

**Skirt clip**  
3010363



Fits modules height ranging from 26mm to 40mm in thickness.

**End Cap**  
1040088



Provides a complete finish to the installation, eliminating safety hazards at the base end.

**Bonding jumper**  
3010406



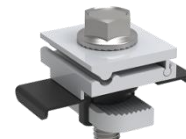
To connect N-S modules or E-W modules.

**Skirt Connector**  
3010405



Splice connection for the skirt, made from high-quality aluminum.

**Grounding Lug 1**  
3010407



Designed especially for TRT Rail.

**Wire cap**  
1040089



Keep the cables in the rail cavity from slipping out.

**Skirt Cap -R**  
1040108



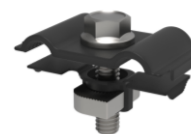
Provides a complete finish to the installation, preventing safety hazards at the end of the skirt.

**Skirt Cap -L**  
1040108



Provides a complete finish to the installation, preventing safety hazards at the end of the skirt.

**Wire management**  
3010168



Manage cables laid vertically with rails.

Version 1.31 04/16/2026

©Top Rack Technology, Inc. Copyright 2026 All rights reserved. The content is protected by copyright law. Top Rack Technology, Inc. reserves the right to modify, update, or amend the content without prior notice.

