

TRT™ Rail Base system TRT™ 02

The TRT™ Rail Base System is an innovative solar racking solution designed specifically for composition shingle rooftops. Unlike the traditional L-foot and flashing plate design, TOP.RACK™ introduces a new cast aluminum racking base. This base can be directly adhered to the asphalt rooftop using butyl adhesive and securely fastened with 5/16 x 3" screws.

For rail installation, TOP.RACK™ utilizes "clip-on" rail fasteners, significantly reducing installation time and enhancing efficiency.

- **UL 2703 LISTED**

The entire system is fully compliant with UL2703 standards.

- **Fits 30~40mm module frames**

The entire system is compatible with solar panel frames ranging from 30 to 40mm.

- **PE certified**

Reviewed and approved by a Professional Engineer (PE) to ensure compliance with safety standards and adequate load capacity.



FEATURES

- **Class A/B fire rating**

Certified to maintain the fire resistance rating of the existing roof.

- **30 years warranty**

Ensures a worry-free experience throughout the product's service life.



PARTS OF SOLAR MOUNTING SYSTEM

Rail -7.54ft/2300mm
A188-2300



Roof rail made from Aluminum 6005-T5 for standard conditions, featuring integrated wire management.

Rail -14ft/4270mm
A188-4270



Roof rail made from Aluminum 6005-T5 for standard conditions, featuring integrated wire management.

Rail Connector
3010404



Splice designed to connect TRT rails, made from high-quality aluminum.

Mid Clamp
3010355



Black surface treatment, compatible with modules 30 ~ 40mm thick, and equipped with a grounding device.

Hidden End Clamp
3010138



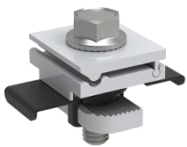
Secures modules to rail ends with a fully hidden bond, with no restrictions on module size or thickness.

Cast Aluminum Rail Base
3010368



Made from cast aluminum with a black anodized finish, designed for direct attachment to TRT Rail, featuring EPDM and butyl rubber pads.

Grounding Lug 1
3010407



Designed specially for TRT Rail.

Bonding Jumper
3010406



To connect N-S modules or E-W modules.

Skirt Clip
3010363



Fits modules ranging from 30 to 40mm in thickness.



PARTS OF SOLAR MOUNTING SYSTEM

Skirt-7.54ft/2300mm
A197-2300



Customizable length options, easy assembly, compatible with any thickness of solar module, and aesthetically pleasing.

Micro Inverter Racking 1
3010167



Rail based system micro inverter holder.

End Cap
1040088



Provides a complete finish to the installation, eliminating safety hazards at the base end.

Skirt Connector
3010405



Splice connection for the skirt, made from high-quality aluminum.

Skirt Cap -L
1040108



Provides a complete finish to the installation, preventing safety hazards at the end of the skirt.

Skirt Cap -R
1040108



Provides a complete finish to the installation, preventing safety hazards at the end of the skirt.

Wire Cap
1040089



Keep the cables in the rail cavity from slipping out.

Wire management
3010168



Manage cables laid vertically with rails.

Version 1.22 01/16/2025

©Top Rack Technology, Inc. Copyright 2024 All rights reserved. The content is protected by copyright law. Top Rack Technology, Inc. reserves the right to modify, update, or amend the content without prior notice.

