

## **TRT Tile Hook System TRT 03**

TRT Tile Hook system is designed for tile roof, high quality of aluminum and stainless steel provides the system a long period service cycle. Different types of hooks could accommodate different tile roof types. Especially Flat tiles, S tiles and W tiles are the most common tile series. Except the main components rails, hook, panel clamps, this system also provide many optional parts, like cable clip, microinverter racking kit, bonding jumper and so on. The universal panel clamp can be used as a mid-clamp or end clamp, it fits panel with thickness from 30mm to 40mm.



## **FEATURES**

- **UL 2703 LISTED**

The entire system complies with UL2703 standards

- **PE certified**

Certified to maintain the fire resistance rating of the existing roof

- **Class A fire rating**

Certified to maintain the fire resistance rating of the existing roof

- **25 years warranty**

Ensure that there are no after-sales worries during the product's service life



## PARTS OF SOLAR MOUNTING SYSTEM

**Rail A188**



Aluminum 6005-T5 made roof rail for standard conditions, Wire management tray, Mill or Black anodized.

**Rail Connector 3010404**



Splice to connect TRT Rail, high quality aluminum made

**Mid Clamp 3010355**



The bridge connecting the roof rack and modules, fits modules from 30~40mm thick, with grounding pins

**Hidden End Clamp 3010138**



Securely bonds modules to rail ends, entirely hidden, No restrictions on module size and thickness

**TRT Tile Hook 3010369**



Direct Attach with TRT Rail, Multiple adjustment functions to fit different tile roof, 5/16"x3" or 5/16"x4" lag bolts

**Tile Hook 3010370**



Stainless steel 304 made, direct attach with TRT Rail, Fits W or S shape tile, 5/16"x3" or 5/16"x4" lag bolts

**Tile Hook 3010371**



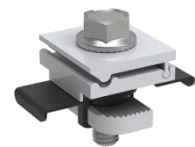
Stainless steel 304 made, direct attach with TRT Rail, Fits flat tile, 5/16"x3" or 5/16"x4" lag bolts

**Skirt A197**



Customized length, easy to assembly, easy for clip on any thick of solar module, beautiful visual

**Grounding Lug 3010407**



Not limited by the type of rail, directly mounted on the module frame



## PARTS OF SOLAR MOUNTING SYSTEM

**Micro Inverter Racking 3010167**



Rail based system Micro inverter holder

**Skirt clip 3010363**



Fit modules from 30~40mm thick

**End Cap 1040088**



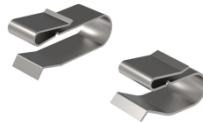
Provide a complete finish to the installation work, Avoid safety hazards at the end of the rail.

**Bonding jumper 3010406**



To connect N-S modules or E-W modules

**Cable clip 1011004**



Cable clip is a universal wire management clip that can be used with all systems

**Wire cap 1040089**



Keep the cables in the rail cavity from slipping out

**Skirt Connector 3010405**



Splice to connect Skirt, High Quality Aluminum made

**Skirt Cap 1040108**



Provide a complete finish to the installation work, Avoid safety hazards at the end of the skirt.

Version 1.1 10/16/2024.

©Top Rack Technology, Inc. Copyright 2024 All rights reserved. The content is protected by copyright law. Top Rack Technology, Inc. reserves the right to modify, update, or amend the content without prior notice.

